



Recruitment Pack

FOR THE ROLE OF TRUSTEE
EVERYTHING YOU'LL NEED TO APPLY

WELCOME

Dear Candidate

Thank you for your interest in joining the Board of Trustees for Jewish Women's Aid. Our trustees play an essential role in the governance of the charity and are vital in ensuring that the work we do meets the needs of the women and their children that we support.

Jewish Women's Aid (JWA) is the only specialist organisation in the UK supporting Jewish women and children affected by domestic abuse and sexual violence, while partnering with our community to build a future free from control, fear and abuse. We provide holistic, culturally specific, and trauma-informed support that enables women and children to live safely and rebuild their lives with dignity. Our services include immediate practical and emotional support, counselling and children's therapy.

We educate and engage the whole Jewish community to tackle Violence Against Women and Girls (VAWG) and foster positive cultures. We work in schools, synagogues, youth movements and in community organisations to reshape attitudes across the Jewish community, challenging norms around domestic abuse and sexual violence. We have a stable staff structure and good funding, allowing us to continue to evolve and grow professionally.

This is an exciting time to join us. If you are passionate about supporting Jewish Women's Aid, then being a JWA trustee can be incredibly rewarding.

Being a trustee does require a commitment to regularly attend meetings and take on a portfolio role, take an active role in donor care and support fundraising so please make sure you have the time for this role before applying. Further details about time commitment and types of experience we are looking for are in the role description.

We do hope this short introduction encourages you to apply to join our committed group of trustees. Please submit your application with a letter saying why you are interested and how your skills and experience meet the trustee roles we are looking to fill. We are happy to answer any questions before you apply.

Good luck with your application.

Best wishes,



Joanne Black, Chair



Catherine Becker, Chair of Nominations and Recruitment

HOW TO APPLY

How to apply

If you are enthusiastic, open-minded, self-motivated, friendly, and committed to making a positive impact in the lives of Jewish women and children affected by domestic abuse and sexual violence, we encourage you to apply.

Your expertise as a Treasurer or Trustee will be instrumental in ensuring the financial well-being and success of Jewish Women's Aid.

To apply for this role, please submit your resume and a cover letter highlighting your interest in JWA to Joanne Black at noms@jwa.org.uk.

For additional information on being a trustee, please refer to the Charity Commission's guidance.

We look forward to welcoming a dedicated and passionate Treasurer or Trustee to our team at Jewish Women's Aid. Together, we can make a meaningful difference in the lives of those we serve.

Applications close Friday 23rd January 2026.

Interviews will take place the week of 26th January 2026.

Due to the nature of this role, we will be considering female applicants only for this post in accordance with the provisions of the Occupational Requirement (Equality Act 2010, pursuant to Schedule 9 part 1).

Our board's diversity is key to our success in representing our community. We particularly welcome applications from Modern Orthodox women to ensure consistency of representation on our board.

Jewish Women's Aid is a feminist organisation and is committed to achieve greater diversity in its executive team/board, and welcome applications regardless of race, age, sexuality, belief or disability.



ABOUT US

Purpose

Jewish Women's Aid is the only specialist organisation in the UK dedicated to supporting Jewish women and children affected by domestic abuse and sexual violence. Sadly, the demand for our services, including client support, outreach and prevention, continues to rise year after year. We deeply appreciate the contributions of our volunteers and their vital role in enabling our work.

Vision

Our vision is of a world where women and girls live their lives free from all forms of abuse and violence.

Mission

We support and empower Jewish women and children affected by domestic abuse and sexual violence. We partner with our community to build a future free from control, fear and abuse.

Our Services

- Freephone domestic abuse and sexual violence helplines and webchat, to enable women to contact us confidentially in a way that works best for them.
- An IDVA (independent domestic violence advocate) service which enables women to plan for their long-term safety and offers them support regarding welfare, legal and housing issues.
- An ISVA (independent sexual violence advocate) service which provides immediate practical and emotional support and long-term safety planning.
- A specialist therapeutic service for children and young adults.
- A flexible counselling service for women; face-to-face in our London or Manchester offices or online, reaching women across England.
- Educational programmes in schools, universities and youth settings, aimed at promoting a culture of consent with a focus on healthy relationships.
- Prevention work in synagogues and other community settings to promote understanding of domestic abuse and sexual violence, including events such as JWA Shabbat.
- Culturally specific training for professionals working with Jewish women, equipping them to support members of our community affected by domestic abuse and sexual violence.

Jewish Women's Aid works closely with other domestic abuse agencies across the sector and model best practice, having achieved our Women's Aid Quality Standards. We work with other organisations across and beyond the Jewish community.

We are proud that these services are provided by a skilled professional team which has sector qualifications, is experienced and up to date with best practice in its field. This team is supported by a dedicated and well-run team of volunteers.

TRUSTEE

JOB DESCRIPTION (1/2)

Role Overview

As a trustee of Jewish Women's Aid, you will play a pivotal role in supporting the organisation's successful delivery of its mission using your unique skills and experience. You will ensure our governance is as strong as possible.



Accountable to

Chair/s

Working relationships

Chair/s, board members, Chief Executive Officer

Key Responsibilities

Will depend on experience and skills either:

- a) Strengthening JWA's oversight in relation to legal remedies
- b) Bringing expertise from and strengthening our role in the VAWG sector
- c) Helping us develop our teams, motivating our volunteers, and working with our professional team to help our clients
- d) Helping us in fundraising and event planning
- e) Helping with oversight to our counselling, therapeutic and clinical services
- f) Helping us provide clear governance.



TRUSTEE

JOB DESCRIPTION (2/2)

We are looking for these skills

- Family Legal experience, VAWG experience, HR experience, Fundraising or Counselling experience.
-

Knowledge and Commitment

- A willingness to understand and appreciate the issues of Violence Against Women and Girls (VAWG) and its intersection with the Jewish Community.
 - Some experience of charity governance (ideal but not essential).
 - Good communication skills.
 - An appreciation of the need for Jewish Women's Aid to grow and diversify its income.
 - A sound understanding of one of the areas listed above.
-

Time Commitment

- Willingness and availability to commit time to the role and the organisation, including attending internal meetings and acting as an ambassador and advocate.
 - An understanding of, and commitment to, promoting the aims and objectives of Jewish Women's Aid.
 - Attend 4 Board meetings per year (held on Thursdays mornings) and one away day per year, as well as sub committee meetings - approximately 4 per year.
 - Attend any strategy meetings when necessary.
 - Take responsibility for a trustee portfolio aligned with your skills and experience.
-

Location

All board meetings are at JWA's offices, and subcommittee and strategy meetings are held online.

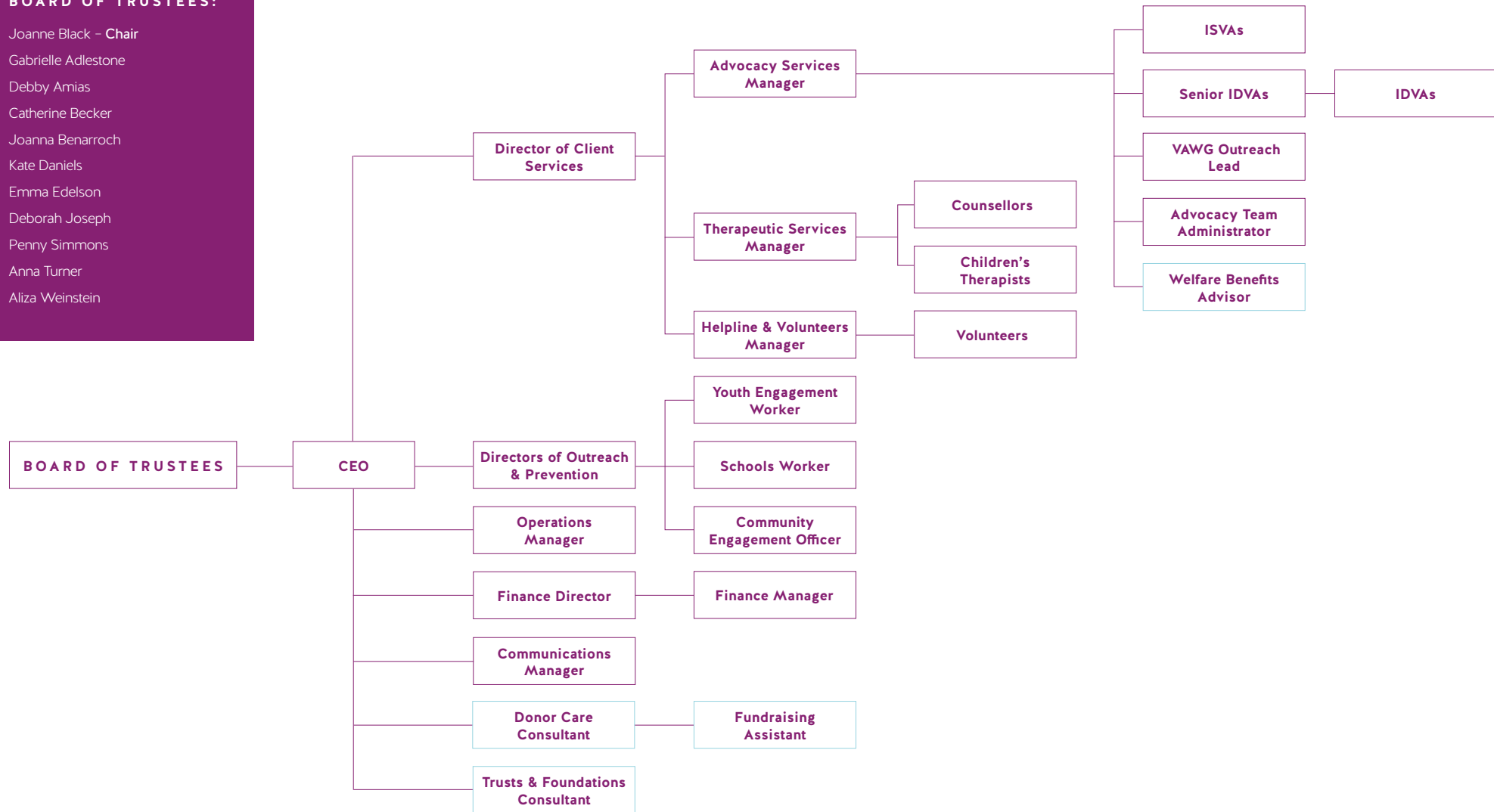
Appointment Details

Please note that Trustees of Jewish Women's Aid are appointed for 2 terms of 3 years, with the option to extend for one further and final term in some circumstances.



BOARD OF TRUSTEES:

Joanne Black – Chair
Gabrielle Adlestone
Debby Amias
Catherine Becker
Joanna Benarroch
Kate Daniels
Emma Edelson
Deborah Joseph
Penny Simmons
Anna Turner
Aliza Weinstein



KEY:

Blue boxes - Contractors

ISVA - Independent Sexual
Violence Advisor

IDVA- Independent Domestic
Violence Advisor